



# MARINE TRANSPORTATION SYSTEM RECOVERY UNIT

## YOUR ROLE IN PORT RECOVERY



### *The Marine Transportation System Recovery Unit*

Hurricanes, earthquakes, floods, tsunamis, vessel sinking, bridge damage, oil spills, cyber attack or terrorist attacks can all threaten port communities. Their consequences include loss of life and damage to property and the environment. They also have the potential to disrupt the movement of vessels and cargo even after emergency actions are complete.

Restoring port functions and resuming commercial activity as quickly as possible is a vital, but obviously complex task. Fortunately, there is a mechanism to prepare for and conduct recovery operations, mitigate the effects of a port closure and enhance the speedy recovery of your port back to normal operations. That mechanism is known as a **Marine Transportation System Recovery Unit**.

It includes government agencies and representatives from the marine industry. Used during the responses to *Deepwater Horizon*, *Hurricane Sandy*, flood and low water events on the Western Rivers, and many other incidents, MTSRU's have proven their value to the Marine Transportation System.



### **The Objectives of the MTSRU are to:**

- ◆ Coordinate and facilitate port recovery activities
- ◆ Track and Report the Status of the MTS
- ◆ Recommend Courses of Action to the Captain of the Port
- ◆ Resume safe, secure maritime commerce after a port disruption.
- ◆ Provide a forum for all stakeholders

Left Photo: Deepwater Horizon Incident

### *What is the MTSRU?*

The **Marine Transportation System Recovery Unit (MTSRU)** is a part of the overall response and recovery effort following a significant port disruption. While Federal, State, and local authorities are working on a wide range of emergency response activities, the MTSRU has the singular focus on re-opening the port for the resumption of commercial activity. To accomplish this, the Coast Guard gathers representatives from governmental agencies and **maritime industry** to form the MTSRU. The MTSRU will typically work in or near the overall Incident Command Post for an incident, but will also conduct many activities by teleconference.

MTSRU participants share information, coordinate their own activities, and make recommendations to the Captain of the Port to resolve problems and resume safe, secure, maritime commerce.



The MTSRU at work, helping the Port of NY/NJ recover from Sandy

### *Examples of MTSRU Tasks*

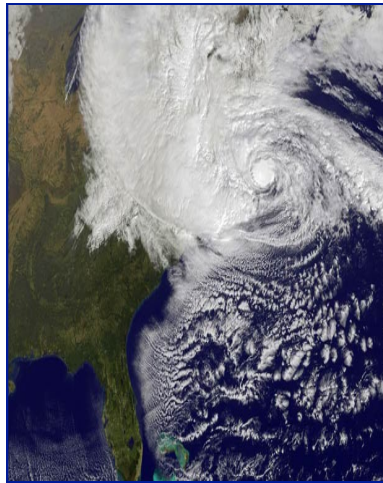
- **Prioritize repairs to damaged Aids to Navigation**
- **Develop marine traffic schemes for safe vessel movements**
- **Prioritize vessel and cargoes movements**
- **Advise agencies on how to deploy personnel and resources to facilitate temporary trade patterns.**
- **Coordinate with salvage and other efforts needed to resume port operations**
- **Prioritize channel surveys and debris removal for safe navigation**

# MTSRUs Need Wide Participation—Your Role in Port Recovery

## Build a Stronger Port Community

Become an active member in the MTSRU. Participate in pre-incident planning, training, exercises, and be available to respond for incident management. MTSRU participants will provide the Incident Commander with marine transportation system expertise to enhance and expedite recovery of the port area.

A strong, resilient port community is better prepared for emergencies, and better able to serve customers during routine day to day operations.




Above Photo: Satellite image of Superstorm Sandy

## Get Involved!

Contact your local Coast Guard Captain of the Port to get involved in MTSRU activities. If possible, attend Area Maritime Security Committee or Harbor Safety meetings. Go to [www.homeport.uscg.mil](http://www.homeport.uscg.mil), and click on the “Port Directory” tab to find contact information about the Captain of the Port nearest you.

MTSRU members will meet periodically to review recovery plans, participate in exercises, or to simply confirm contact information. Should an actual port disruption occur the members will come together as needed to help the recovery effort.

## Effective Port Recovery Requires Everyone on the Waterfront!

Federal	Maritime Industry	State and Local Government
<ul style="list-style-type: none"> <li>● Department of Defense</li> <li>● Department of Transportation</li> <li>● U.S. Army Corps of Engineers</li> <li>● U.S. Customs and Border Protection</li> <li>● Transportation Security Administration</li> <li>● Maritime Administration</li> <li>● Federal Emergency Management Agency</li> <li>● Environmental Protection Agency</li> <li>● National Oceanographic and Atmospheric Administration</li> <li>● U.S. Navy Supervisor of Salvage</li> </ul>	<ul style="list-style-type: none"> <li>● Ocean carriers</li> <li>● Coastwise carriers</li> <li>● Ship assist tugs</li> <li>● Tow boats and barge operators</li> <li>● Cruise ship operators</li> <li>● Container facilities</li> <li>● Dry bulk facilities</li> <li>● Oil/liquid bulk facilities</li> <li>● Passenger terminals</li> <li>● Ferry and water taxi operators</li> <li>● Shippers/Freight Fwd</li> <li>● Trade Organizations</li> <li>● Marina operators</li> <li>● Rail Operators</li> <li>● Trucking Companies</li> <li>● Shipyards</li> <li>● Fleeting Operations</li> <li>● Marine Exchanges</li> <li>● Organized Labor</li> <li>● Stevedoring</li> <li>● Vendors</li> <li>● Ship Chandlery</li> <li>● Mutual Aid/Co-Ops</li> <li>● Salvage and marine construction firms</li> <li>● Chamber of Commerce</li> </ul>	<ul style="list-style-type: none"> <li>● Pilots Association</li> <li>● Port Authority</li> <li>● Emergency Management</li> <li>● Marine Police and Fire</li> <li>● Law Enforcement</li> <li>● Fish &amp; Wildlife</li> <li>● Public Health</li> <li>● Tribal Organizations</li> </ul>
	<p>From elegant cruise ships to hard working barges, the maritime industry is vital to our nation's economy and security. A MTSRU can help your port get back to business.</p>	