

# Collier County, Florida



## Primary North Boat Ramp: Cocohatchee River Park

- Deep draft 6'+
- Multi Paved ramps
- USCG Aux Bldg on site
- County owned
- Security on site
- Shade
- Lots of paved parking
- **Also used as north staging**

GPS:

26 17 36.87 N

81 49 12.12 W

Physical Address:

13531 Vanderbilt Drive

Naples, FL



# Primary Northern Boat Ramp: Cocohatchee River Park

## Facilities

## Parking



# Primary Northern Boat Ramp: Cocohatchee River Park

## Overview



## Primary Central Boat Ramp: Bayview Park

- Wide paved ramp
- Limited on parking
- Very close to Gulf
- County owned
- Security on site
- Shade

GPS:

26 06 10.13 N

81 47 03.37 W

Physical Address:

1500 Danford Street

Naples, FL



# Primary Central Boat Ramp: Bayview Park

## Facilities

## Parking



# Primary Central Boat Ramp: Bayview Park

## Overview



## Primary Southern Boat Ramp: Caxambas Park

- One paved ramp
- County owned
- Bathroom, water, electric
- Paved parking near by
- Fuel available
- On Gulf
- Space for staging(paved)

GPS:

25 54 44.94 N

81 43 01.34 W

Physical address:

909 Collier Ct.

Marco Island, FL





# Primary Southern Boat Ramp: Caxambas Park

Facilities

Parking



# Primary Southern Boat Ramp: Caxambas Park

## Overview



## Alternate Southern Boat Ramp: Chokoloskee Boat Ramp

- Airboat, flat boat only
- Used to cover 10,000 island area
- Access to Gulf
- No facilities
- Some wet dock space
- No staging, private

GPS:

Physical address:



# Alternate Southern Boat Ramp: Chokoloskee Boat Ramp

## Additional Photo

## Parking



# Alternate Southern Boat Ramp: Chokoloskee Boat Ramp Overview



## Primary Inland Staging Area: Fairgrounds

GPS:

26 18 18.26 N

81 35 30.36 W

Physical address:

751 39<sup>th</sup> Ave NE,  
Naples, FL



# Primary Southern Staging Area: County Airport

GPS:

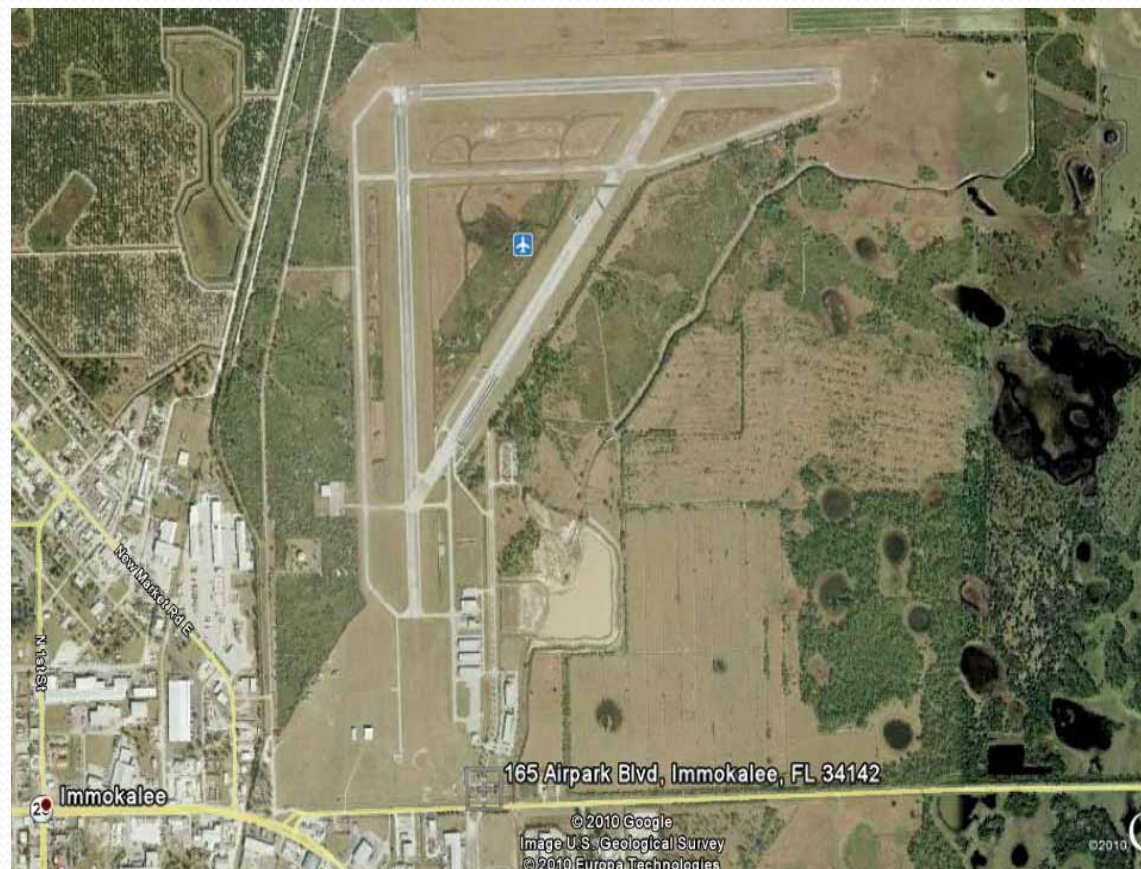
26 25 27.05N

81 24 16.51W

Physical address:

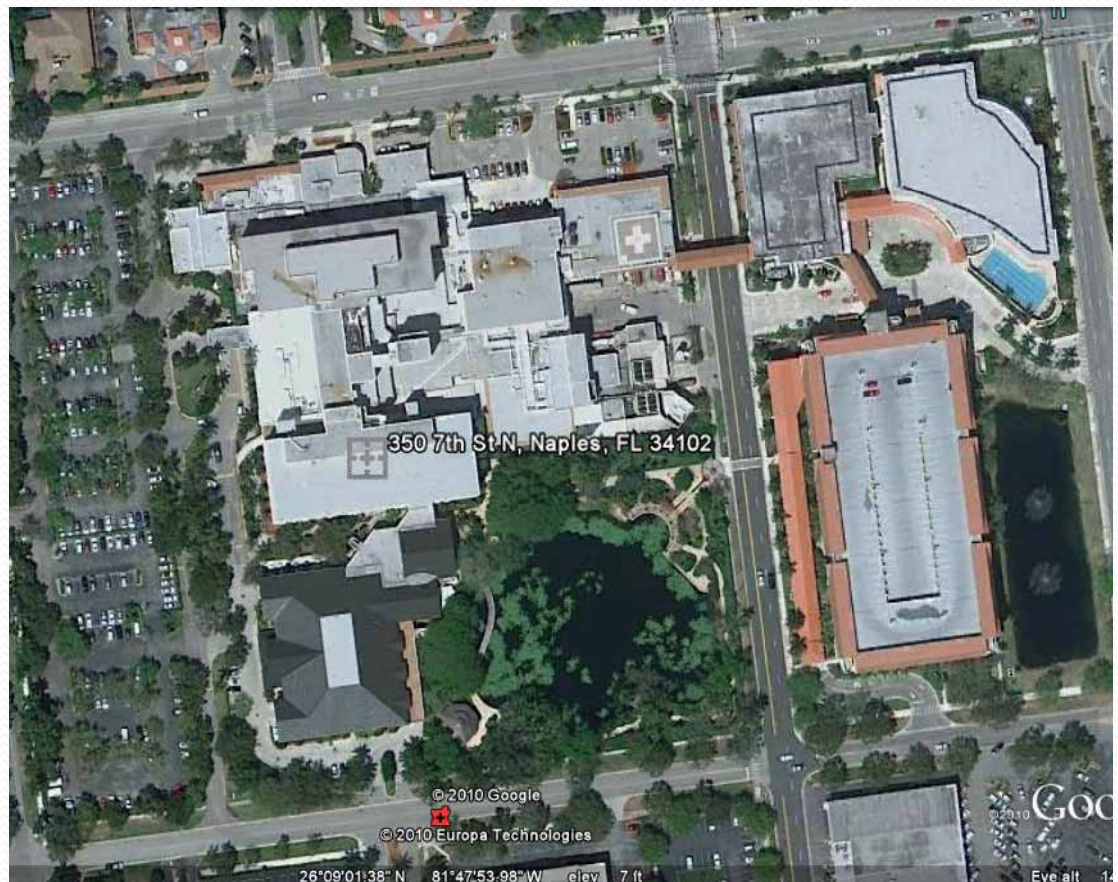
165 Airpark Blvd,

Immokalee, FL 34142



# Hospitals/Regional Care

Naples Community Hospital  
350 Seventh Street N  
Naples, Florida  
(239)436-5200





# Hospitals/Regional Care

\*Closest Trauma One\*

St. Joseph Hospital  
3001 West MLK Jr. Blvd  
Tampa, FL 33608  
813-554-8762

POC:  
AOD on Duty

