

# Levy County, Florida



# Primary North Boat Ramp: Cedar Key Dock

- Two ramps
- Paved
- Open water ramp
- 60 parking spaces
- Restrooms and shade
- \$10.00 Fee to launch
- 100+ Hotel rooms close by

## GPS:

- 29 08 09.20N
- 83 01 45.71W

## Physical Address:

- 550 Dock St., Cedar Key, FL



# Primary North Boat Ramp: Cedar Key Dock

## Parking



## Additional view of ramp





# Primary North Boat Ramp: Cedar Key Dock

## Google Earth Overview



## Alternative North Boat Ramp: #4 Bridge Boat Ramp

- Narrow ramp
- Paved
- Shallow at Low Tide
- 10 parking spaces
- Low Bridge, Max Vessel size 20 > feet
- Bathroom
- FWC building at ramp

### GPS:

- 29 09 54.95N
- 83 01 38.91W

### Physical Address:

- 11311 SW 153<sup>rd</sup>, Cedar Key, FL





# Alternative North Boat Ramp: # 4 Bridge Boat Ramp

## Parking



## FWC Building



# Alternative North Boat Ramp #1: # 4 Bridge Boat Ramp

## Google Earth Overview



Image U.S. Geological Survey  
© 2010 Google

Google

Imagery Date: Jan 2008

29°09'48.06" N

83°01'39.95" W

elev 4 ft

Eye alt 1214 ft



## Alternative North Boat Ramp #2: Anchor Hole Boat Ramp

- Paved
- Deep draft ramp
- Owned by Aquaculture Assoc
- No parking
- No facilities

### GPS:

- 29. 08 57.36N
- 82. 02 27 17W

### Physical Address:

- East end of Hodges Ave,  
Cedar Key, FL





## Alternative North Boat Ramp #2: Anchor Hole Boat Ramp

### Boat Ramp Far



### Boat Ramp Up Close



## Alternative North Boat Ramp #2: Anchor Hole Boat Ramp

### Google Earth Overview



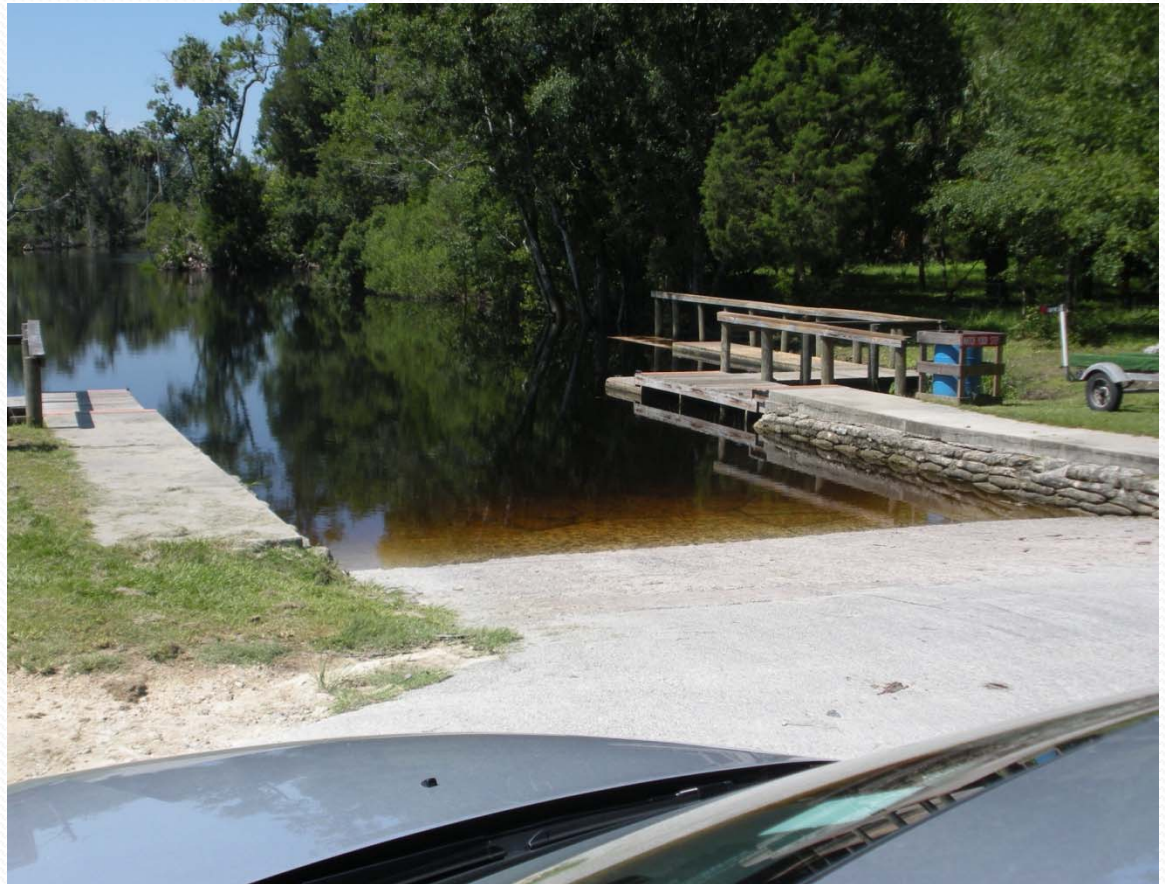


## Primary Central Boat Ramp: Waccasassa Park Boat Ramp

- Good parking/Staging
- Ramp in good condition
- Restrooms, water, electric
- 5-10 minutes from US-19
- County owned

### GPS:

- 29 12 49.24
- 82 45 48.92





# Primary Central Boat Ramp: Waccasassa Park Boat Ramp

## Google Earth View





## Primary South Boat Ramp: Bird Creek Park Boat Ramp

- Two small ramps
- Ramps in good condition
- Restrooms, electric
- Parking/Park 200 yards away
- County owned

### GPS:

- 29 00 04.73N
- 82 45 42.50W



# Primary South Boat Ramp: Bird Creek Park Boat Ramp

## Google Earth Overview





## Alternative South Boat Ramp: Yankeetown Marina

- 56 Boat slips
- Private
- Some parking/Staging
- Spoke with owner-half of slips available now

### GPS:

- 29 01 24.63N
- 82 43 21 59W

### Physical Address:

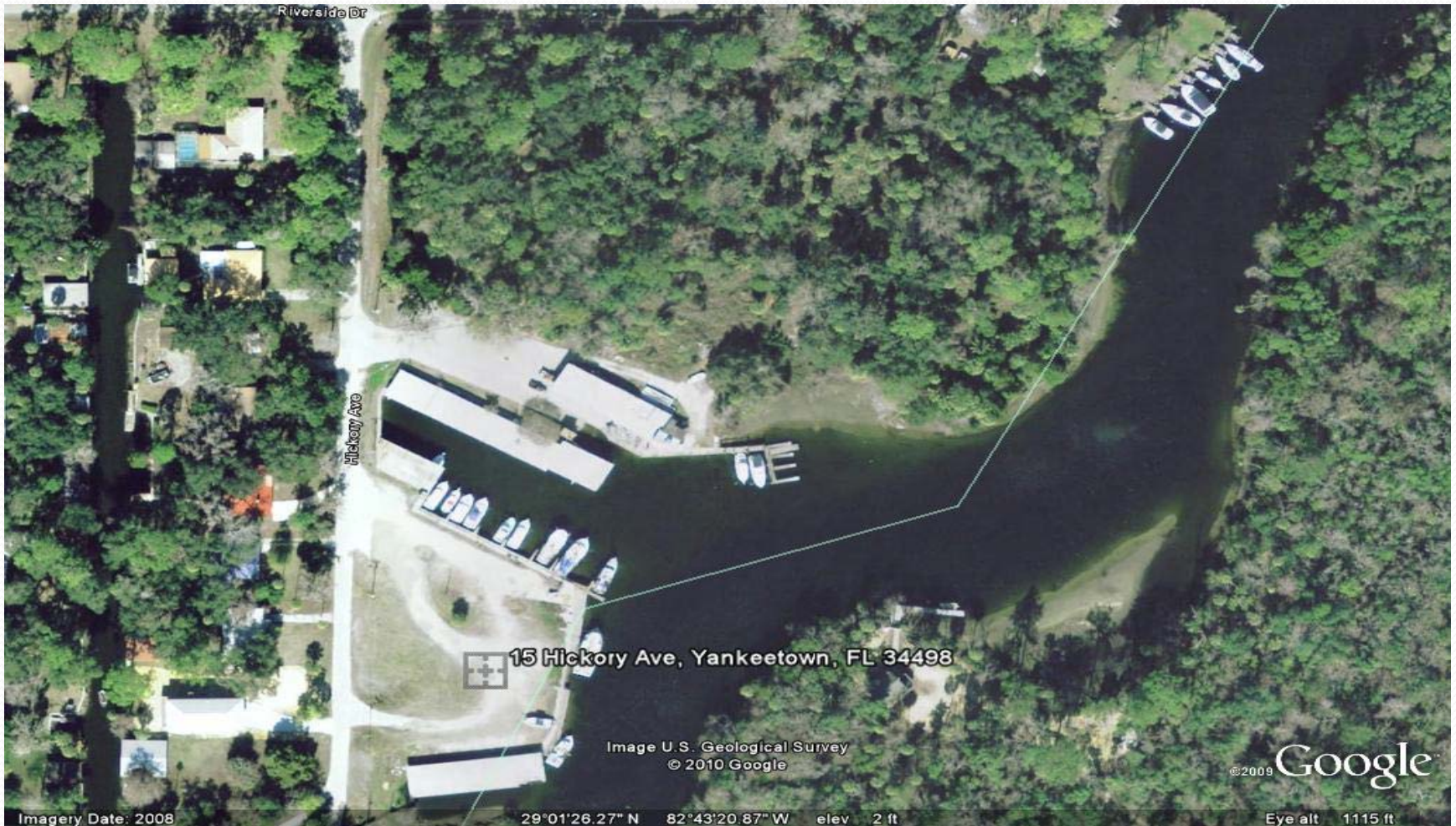
15 Hickory Avenue,  
Yankeetown, FL 34498  
(352) 447-2529

[yankeetownmarina.com](http://yankeetownmarina.com)



# Alternative Southern Boat Ramp: Yankeetown Marina

## Google Earth View





# Primary Staging Area: Florida Rock Company

- Closed private business
- bathrooms, electric, building
- Fenced in
- Off US-19, easy access to all boat ramps
- 12+ Acres



# Alternative Staging Area: Levy ARC

- County owned
- 3+ Acres
- Lighting
- facilities
- Close to US-19 in South/Central Area

## GPS:

- 29 19 24N
- 82 46 36W





# Alternative Staging Area: Levy ARC

**Additional Parking**



**Facilities**





# Alternative Staging Area: Levy ARC

## Google Earth View





# Alternative Staging Area: Cedar Key Airport

- Limited space without closing runway
- Deepwater access to South(private land) that would require floating dock

GPS:

-29 07' 38.33" N

-83 03' 04.61" W



# Alternative Staging Area: Cedar Key Airport

Runway



Possible Water Access





# Alternative Staging Area: Cedar Key Airport

## Google Earth Overview



## Possible Command Center: Cedar Key Community Center

809 6<sup>th</sup> Street, Cedar Key, FL



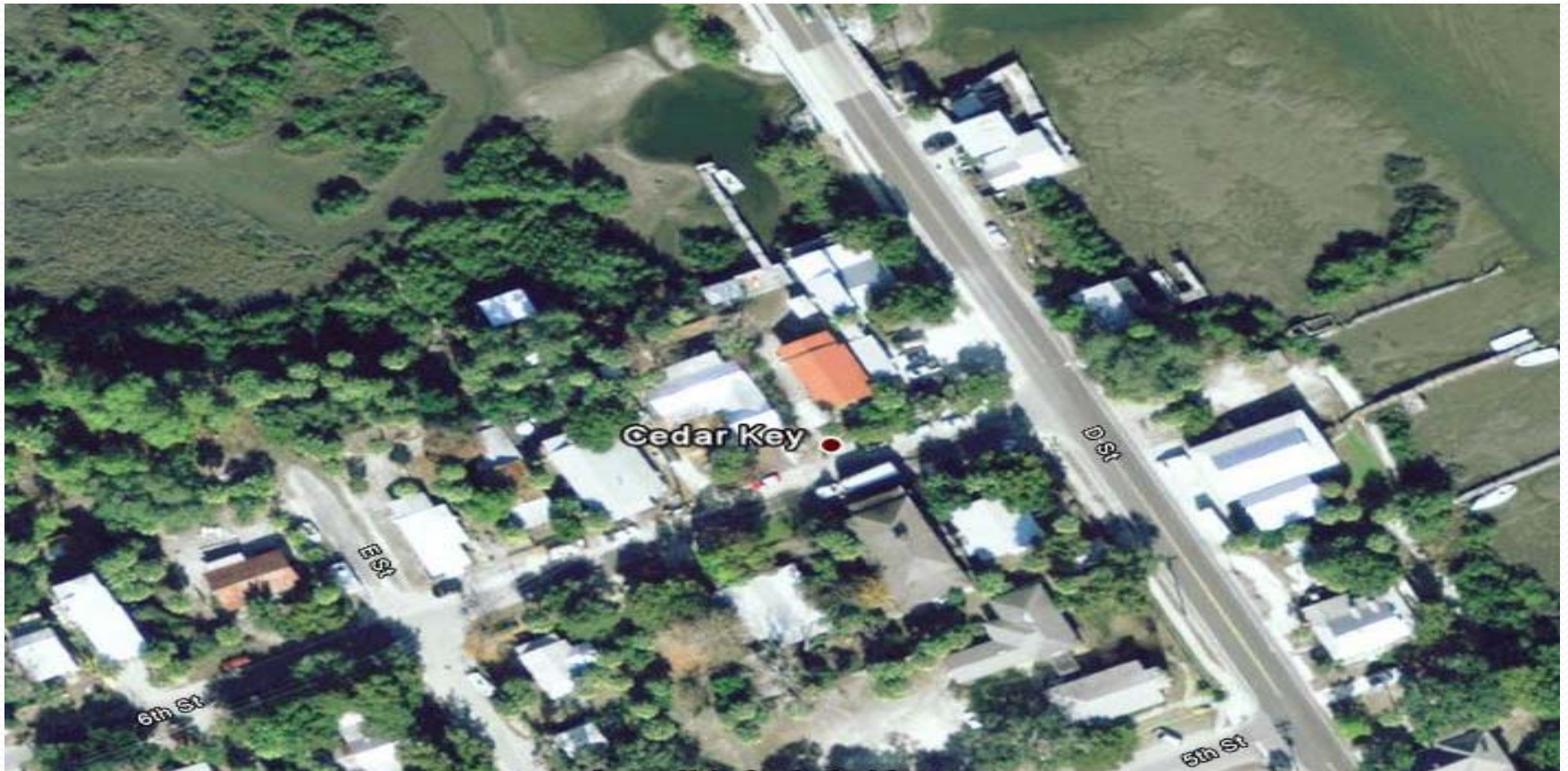


# Possible Command Center: Cedar Key Community Center Interior



# Possible Command Center: Cedar Key Community Center

## Google Earth Overview

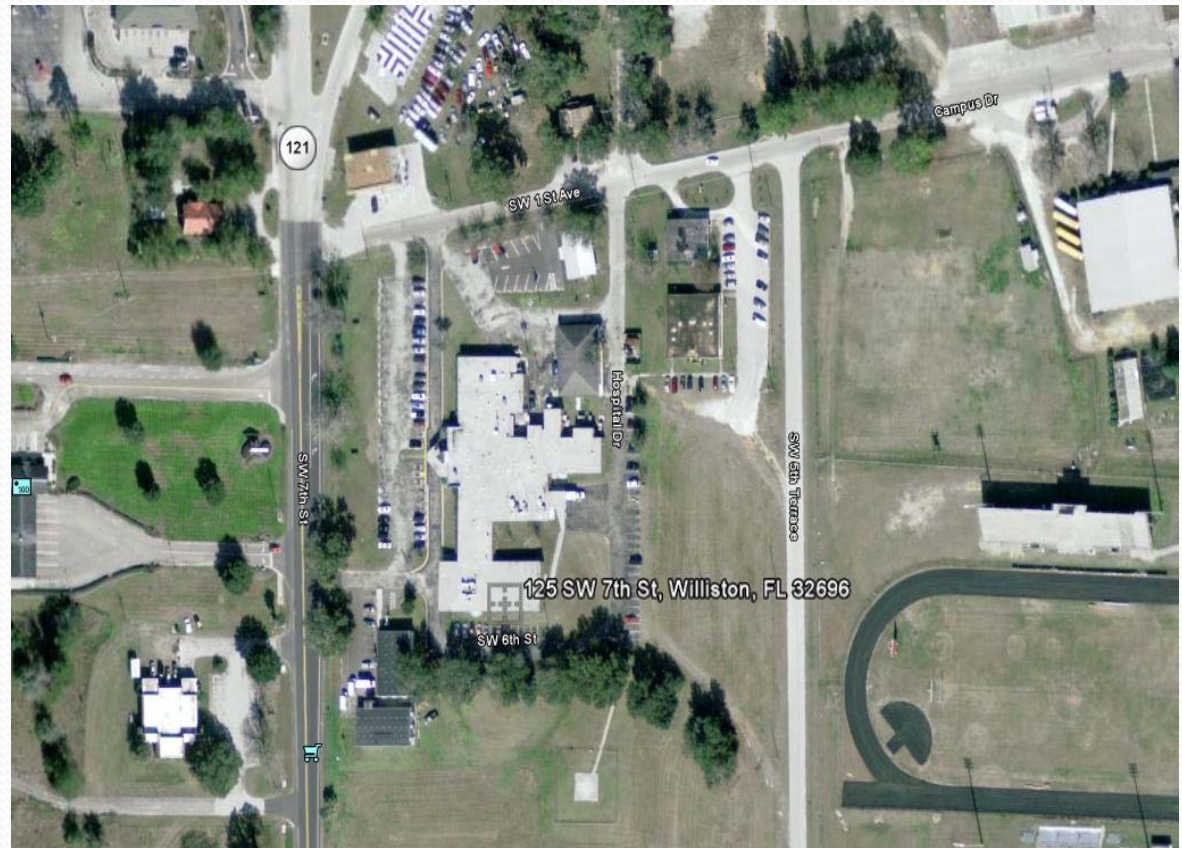




# Local Hospital(s)

Nature Coast Regional Hospital  
125 SW 7<sup>th</sup> Street  
Williston, Florida 32696  
352-528-2801

\*Not a trauma hospital\*  
Tampa or Gainesville for trauma



# Hotel Accommodations

\*The Cedar Keys Chamber of Commerce did a 45 day study(June-July 2010) on the total number of available rooms located in the City of Cedar Key, which is located in northern Levy County, Florida. According to the study, there are approximately 350 available rooms on the island, not including non-members or houses.

Below are some of the larger inland hotels in Levy County:

Best Western Suwannee Valley

1125 North Young Boulevard, Chiefland, FL - (352) 493-0663

Days Inn Chiefland

809 Nw 21st Ave., Chiefland, FL - (352) 493-9400

Manatee Springs Motel

2226 North Young Boulevard, Chiefland, FL - (352) 493-2991



# Points of Contact

## **Levy County Parks & Recreation**

Director Matt Weldon

352-486-5127

## **Levy County Emergency Management**

Director Mark Johnson

352-486-5213

## **Levy County 24/7 Dispatch**

352-486-2769

## **Yankeetown Municipal PoC's**

Fire Chief : 352-398-5723

Town Hall: 352-447-2511

## **Cedar Key Municipal PoC's**

City Hall: 352-543-5132

Police: 352-543-5180

## **Florida F & W Law Enforcement**

352-543-0815